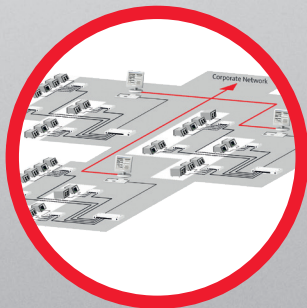




# VISUmanager



Parameter | Diagnostics |  
Maintenance | Backup/Restore

Management software for administration and function visualization  
of weld process controllers

## FEATURES:

- **Access control:** Use of special SD key cards to unlock the weld process controller: Access restrictions with user-level management.
- **Maintenance timer:** Service intervals can be set via maintenance timers. The integrated acknowledgment function ensures that the maintenance is carried out punctually.
- **Electronic shift log:** User-dependent comments can be added to events.
- **Q8Xremote:** visualization of measured values, changes of settings and alarm messages of the welding system. The data will be stored on SD card and synchronized with the Q8Xremote software via network.

## Parameter management

In the parameter view welding parameters can be edited (depending on user level). The changes will become effective in realtime.

In the upper section the familiar buttons of the weld process controller (Selection Group /Part, Copy, Paste, Undo, Redo, Save, Compare, Load) can be found.

## Diagnostics module

Here you have the choice between the display of the actual values and the inputs and outputs with fieldbus connection of the welding system.

## Statistics tab

In the statistics view you can find a freely editable system logbook, an overview of all changes made to welding parameters, maintenance timers, a list of alarms, and a list of all measured values. In the freely editable logbook, users can store entries for general incidents of the system. The entries are saved with time stamp and user name.

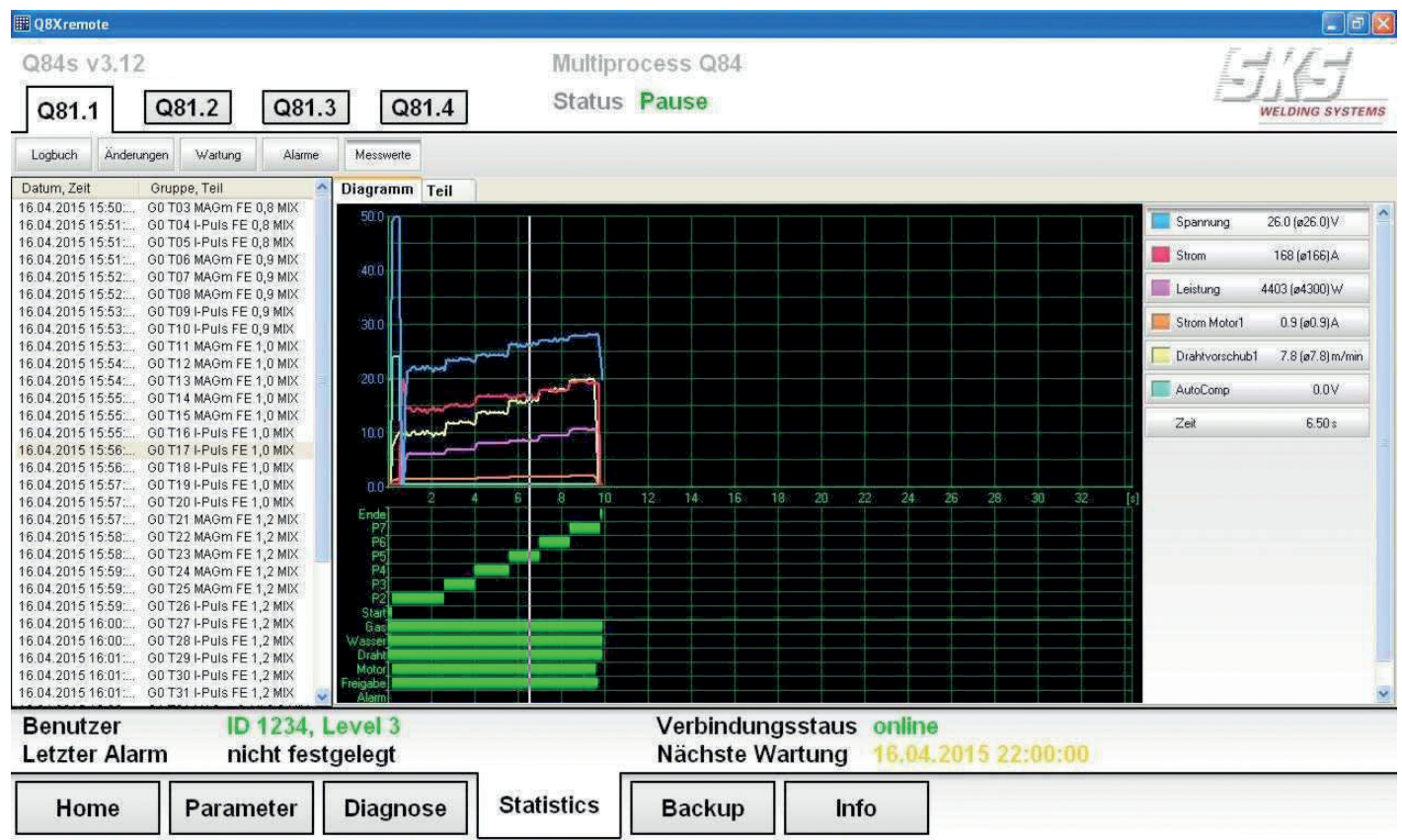


# Maintenance management

In the maintenance area maintenance timers can be defined. After expiry of the maintenance timer, the weld process controller and the software Q8Xremote provides an optical signal that maintenance is required. A maintenance bit will be set on the field bus for field bus systems. After completion the maintenance has to be acknowledged. This can be done at the weld process controller or in the software Q8Xremote). The maintenance can be commented with a note (optional).

The acknowledgment of the maintenance is recorded including the maintenance time stamp and endorsement. A standard text is entered as a default alarm message. This can be edited to display a more detailed reason. A register of all occurring alarms can be found here.

# Measurement values visualization



Measurement value records with the corresponding welding parameters of the welding system are sorted chronologically as list types. This supports fast finding of welding parameters for new weld parts. In addition, the measured values can be processed for quality assurance measurements.

# Backup/Restore

A backup of the complete content of the weld process controller can be done easily. With the SD card support, the backup can be restored locally at the weld process controller.

# Welding system overview

The firmware revisions of the welding system are clearly shown in a list of the system components.



[www.sks-welding.com](http://www.sks-welding.com)